

Now ideas for wellness

**meiji**

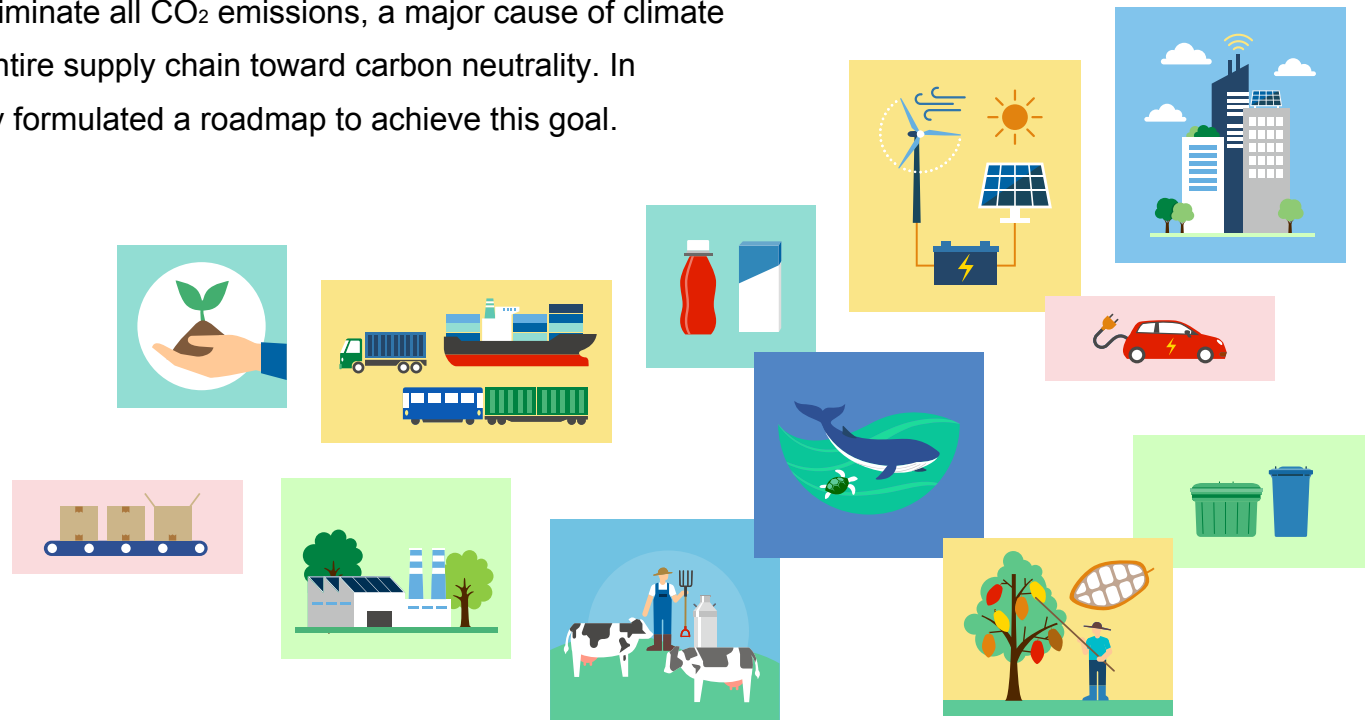
# CARBON NEUTRALITY BY 2050

**Toward Carbon Neutrality**

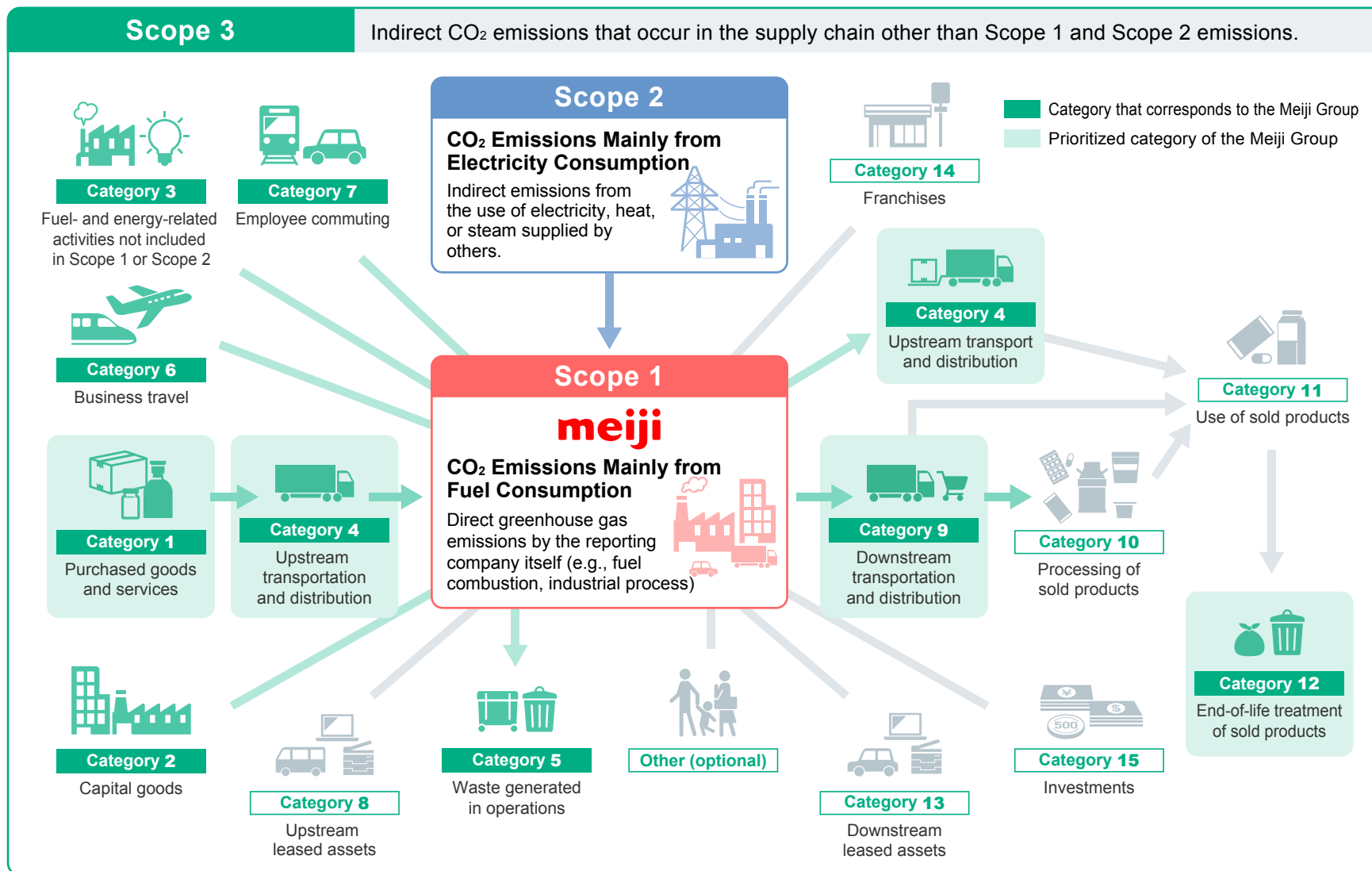
# Toward Carbon Neutrality

The Meiji Group is based on the bounty of nature, such as raw milk, cocoa, lactobacillus and microorganisms. We therefore believe that it is our responsibility to live in harmony with the global environment and nature.

However, sustainability of the global environment has been threatened by climate change and other factors in the recent years. The Meiji Group has been performing initiatives to eliminate all CO<sub>2</sub> emissions, a major cause of climate change, throughout our entire supply chain toward carbon neutrality. In addition, we have recently formulated a roadmap to achieve this goal.



# Three Scopes of Emissions Covered by the Meiji Group



# Two Targets of the Roadmap

## 1 Aim for **Scope 1** and **Scope 2** Carbon Neutrality

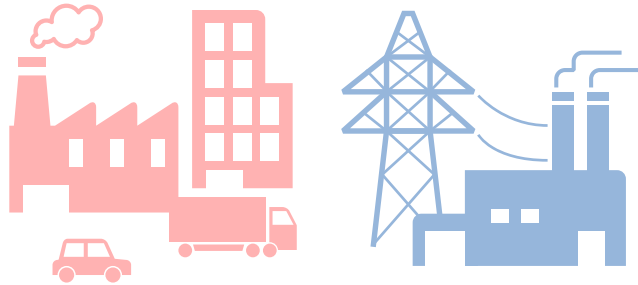
GHG\* emissions (compared with FY2019)

FY2030

**50% reduction**

2050

**Net zero achieved**



## 2 Aim for **Scope 3** Carbon Neutrality

GHG\* emissions (compared with FY2019)

FY2030

**30% reduction**

2050

**Net zero achieved**



■ Prioritized category of the Meiji Group

\*GHG: Greenhouse Gas



# Roadmap: Scope 1 and Scope 2

## Target

### 1 Aim for **Scope 1** and **Scope 2** Carbon Neutrality

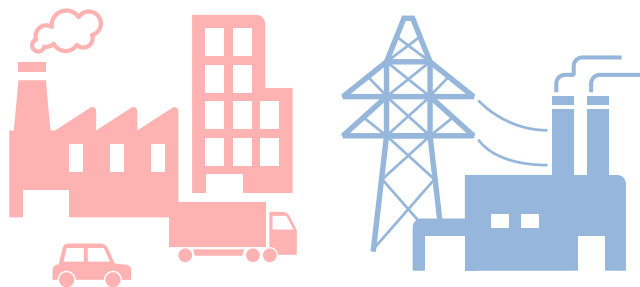
GHG\* emissions (compared with FY2019)

FY2030

**50% reduction**

2050

**Net zero** achieved

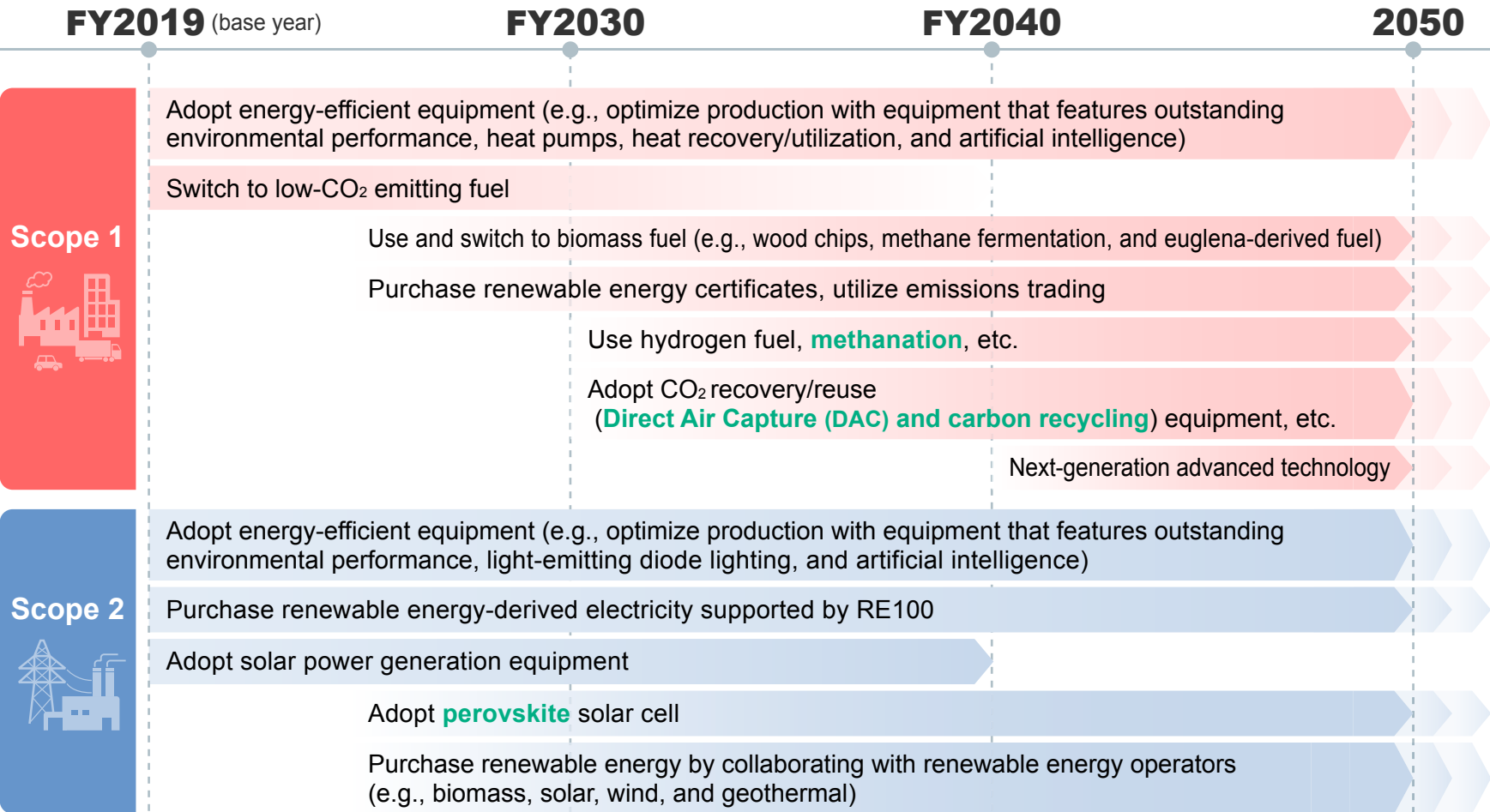


- 1 Solar panels
- 2 Wind power generation
- 3 Methane fermentation facilities
- 4 Hydrogen fuel
- 5 Geothermal power generation

\*GHG: Greenhouse Gas

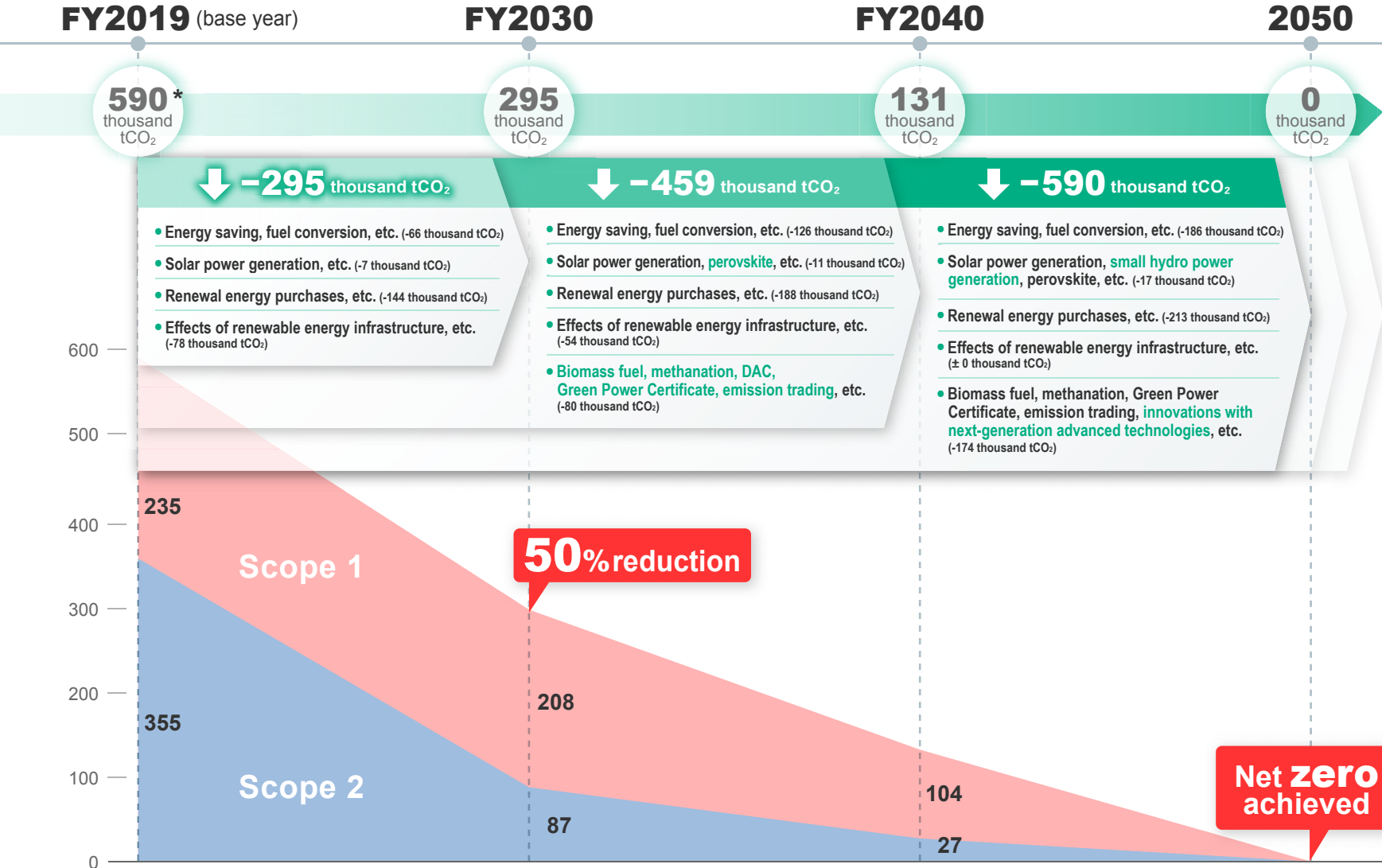
# Roadmap: Scope 1 and Scope 2

The Meiji Group strives to proactively implement initiatives and introduce new technologies to achieve carbon neutrality by 2050, outlined in our Long-term Environmental Vision.



\*Green-colored words: new technologies under development

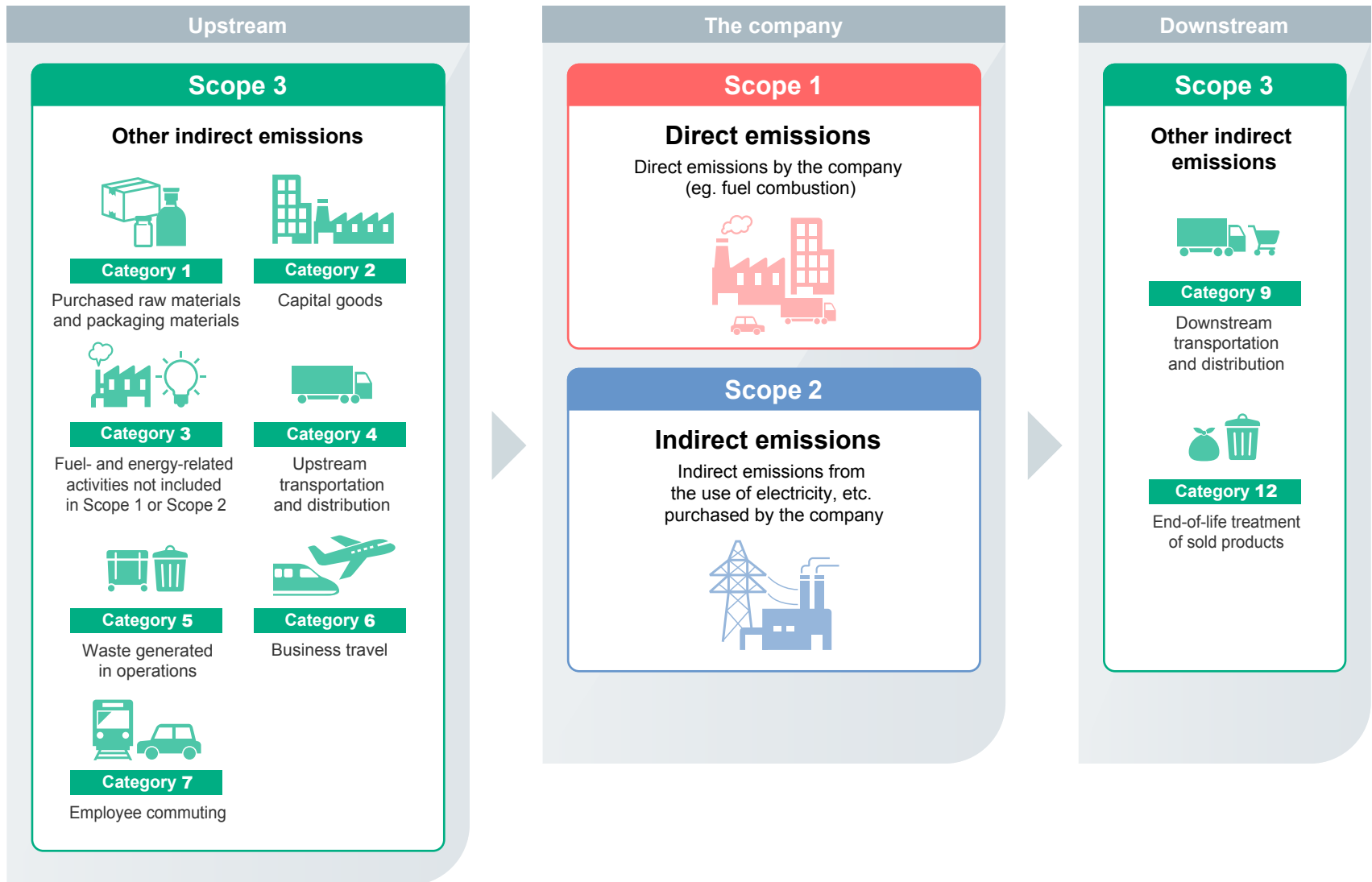
# Roadmap: Scope 1 and Scope 2



[Calculation condition] KPI on the renewable energy electricity ratio for FY2030: 50%, CO<sub>2</sub> emission factors of electricity are based on IEA's Net Zero Emissions by 2050 Scenario. Figures approved by the SBT initiative.

\* The base year emission figures approved by the SBT initiative exclude vehicle-related CO<sub>2</sub> emissions from FY2019 (Scope 1 and 2).

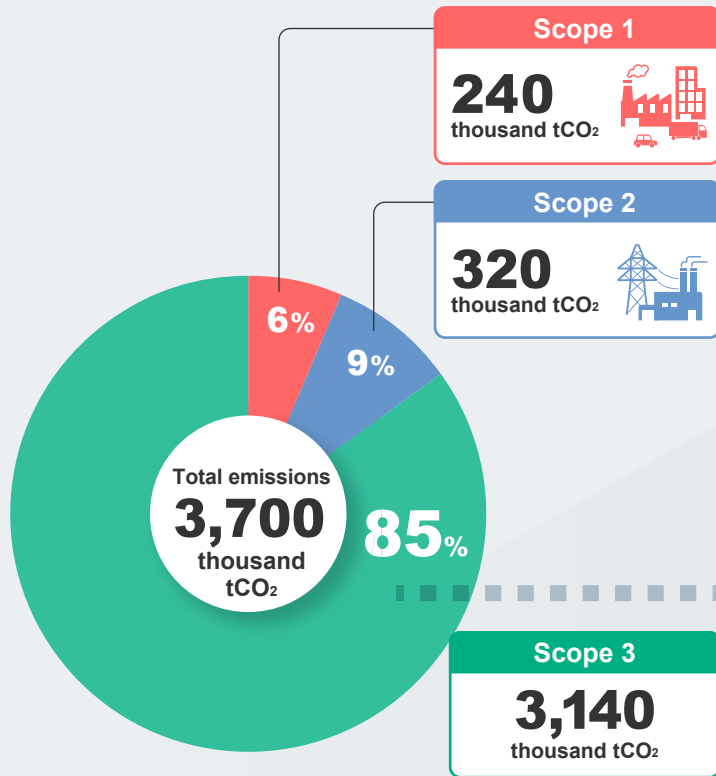
# Supply Chain: Scope 3



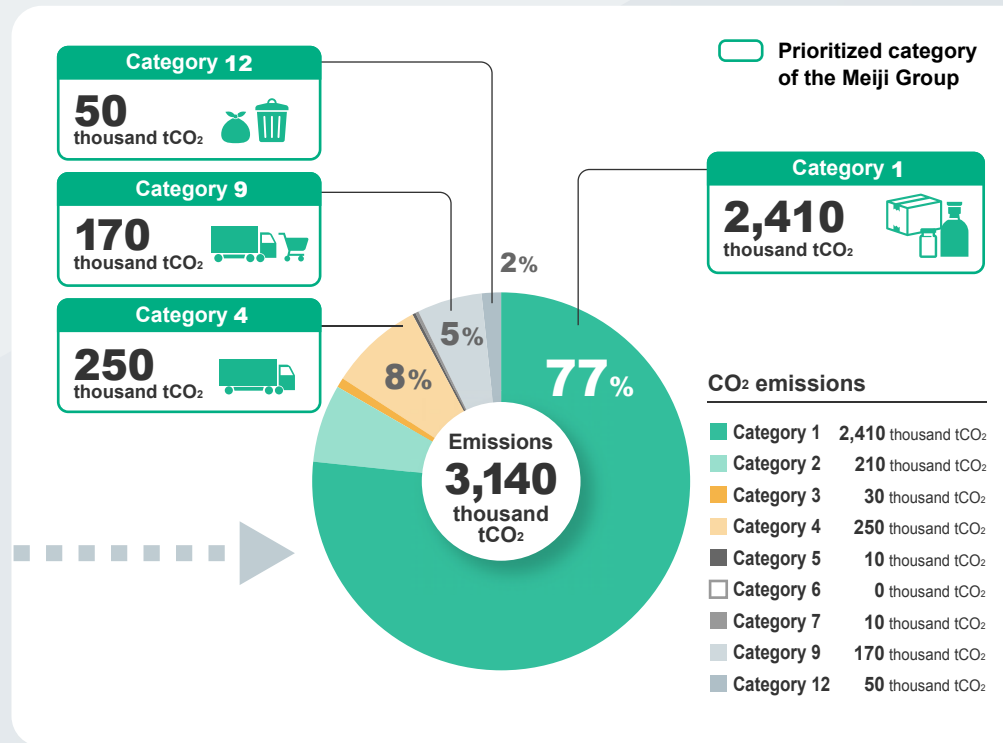


# Breakdown of CO<sub>2</sub> Emissions

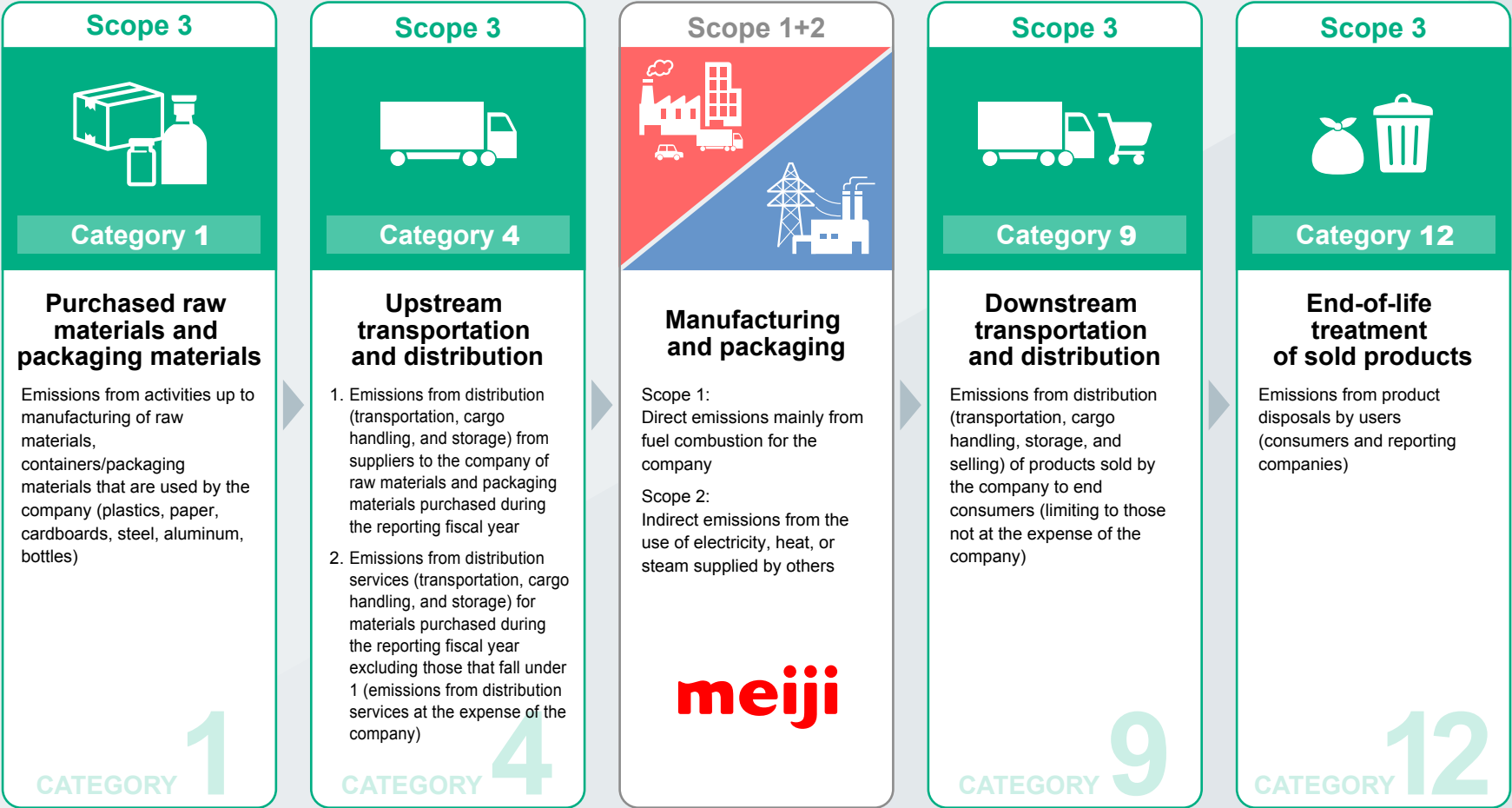
The Meiji Group's total CO<sub>2</sub> emissions (FY2020)



CO<sub>2</sub> emissions from the Meiji Group's target Scope 3 categories (FY2020)



# Details of Target Categories



# Initiatives for Scope 3 Emissions: Category 1



## CO<sub>2</sub> reductions in Category 1, which accounts for 77% of Scope 3 emissions

To achieve carbon neutrality, we will actively encourage and collaborate with our suppliers to reduce CO<sub>2</sub> emissions.

We take measures to understand the actual state of major suppliers' CO<sub>2</sub> reduction targets and efforts, and we promote engagement based on that understanding.

### Raw milk and dairy ingredients

#### Initiatives concerning our major materials: raw milk and dairy ingredients

As a member company of the Global Dairy Platform (GDP), a global alliance of players in the dairy industry, we are fully committed to carbon neutrality in line with GDP's "Pathways to Dairy Net Zero," in full cooperation with industry associations and other players, government, and academia.

#### Meiji Dairy Advisory (MDA), a unique program of the Meiji Group

In MDA, independent Meiji activities for supporting dairy farmer management, GHG\* emissions are being reduced by increasing raw milk production.

#### Research on low-carbon dairy farming and carbon credits, etc.

We have been researching how to develop feedstuffs and dispose manure to suppress methane production.



An Example of MDA Activities: Performed on-site "Improvement Activities" with dairy farmers to check the health condition and feeding behavior of their dairy cows.

\*GHG: Greenhouse Gas

# Initiatives for Scope 3 Emissions: Category 1



Category 1

## Cocoa

### Participation in Cocoa & Forests Initiative (CFI) and promotion of agroforestry farming

We participate in the Cocoa & Forests Initiative, a global partnership for the protection and restoration of forests, and work with the government of Ghana and related organizations to aid forest conservation. In addition, we are working with cocoa farmers in Tomé-Açu, Brazil, to promote agroforestry farming\*, a form of agriculture that creates forests, in our forest conservation work.

In Meiji Cocoa Support, an independent Meiji activity supporting cocoa farmers, we donate wells, distribute free seedlings, and provide guidance on farm management, activities leading to the conservation of forests that will sequester CO<sub>2</sub>.

\*Agroforestry farming: A combination of the words "agriculture" and "forestry." This is an agricultural method in which a diverse set of agriculture and forestry is cultivated in keeping with the natural ecosystem on land after trees have been harvested.

[https://www.meiji.com/sustainability/cocoa/forest\\_protection/](https://www.meiji.com/sustainability/cocoa/forest_protection/)  
(Japanese version only)

## Palm oil

### Promotion of switch to RSPO-certified palm oil

We are taking action toward 100% replacement to palm oil certified by the Roundtable on Sustainable Palm Oil (RSPO) by FY2023. This helps prevent deforestation, thereby promoting CO<sub>2</sub> capture.



Farm management guidance provided by the Meiji Cocoa Support concerns specific actions, such as climate change-adapted cultivation methods and agriculture that can halt deforestation.



Meiji product made from Brazil's Tomé-Açu cocoa cultivated by agroforestry farming

# Initiatives for Scope 3 Emissions: Category 4, 9, 12



## Reductions of CO<sub>2</sub> emissions from manufacturing, distribution, and disposals of our products

### Plastics

#### 25% reduction in plastic usage by FY2030 (compared with FY2017)

By reducing the weight of plastic containers and packaging, we are working to reduce CO<sub>2</sub> emissions during product manufacturing, distribution, and disposal. We are also working with suppliers and others to switch their container and packaging raw materials from fossil fuel-derived plastics to recycled plastics and bioplastics, which have a smaller environmental impact, while still ensuring product quality.

Examples of products using bioplastic mix for containers



#### Launched switch to a bioplastic mix for containers in 2021

In February 2021, we began blending bioplastics into straws, plastic cups, and other containers and packaging. Furthermore, from July 2022, we will gradually switch to bioplastics for use in the caps of Meiji Oishii Gyunyu and other products. As a result, we aim to reduce CO<sub>2</sub> emissions from containers by approximately 10% to 15%\* compared to conventional methods.



\*Our CO<sub>2</sub> reduction rate is certified by Carbon Trust.



### Paper

#### 100% switching to paper raw materials (used paper, FSC®\* and other forest-certified paper) by FY2023

By FY2023, we will switch 100% of product containers and packaging materials to eco-friendly paper raw materials (FSC®-certified or other forest certified paper, including recycled paper). This helps prevent deforestation, thereby promoting CO<sub>2</sub> capture.

\*FSC® (Forest Stewardship Council®): An NPO for global forest management, dissemination, and certification



## CARBON NEUTRALITY BY 2050

The Meiji Group has been proactively engaging in initiatives to eliminate all CO<sub>2</sub> emissions throughout our entire supply chain toward the carbon neutrality. Furthermore, taking these initiatives as opportunities to grow further, the Group endeavors to transform whole socioeconomic system (GX: Green Transformation).

**The Meiji Group, as a group of food and health professionals, will continue finding innovative ways to meet our customers' needs toward a healthy future for people, and for the Earth.**